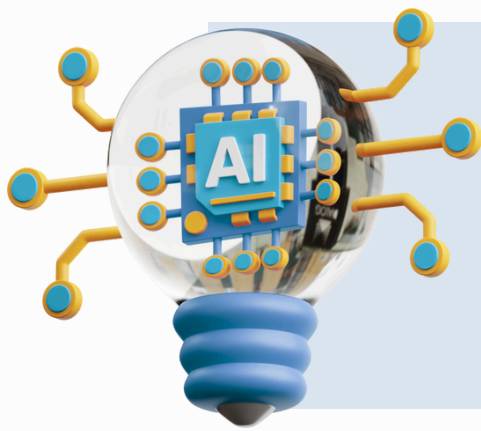


AI & Assessments

A guide for students

What is AI?

AI, or artificial intelligence, functions like a computer that possesses the ability to think. AI tools, such as ChatGPT and Snapchat My AI, can generate text, create art, and compose music by learning from data sourced from the internet. However, be cautious – they also have the potential to fabricate information and exhibit bias.



How can AI be misused & what happens if it's used in exams?

AI misuse is when you take something made using AI and say it's your own work. This is cheating and you could lose your marks if you've misused AI, you could lose your marks for the assessment - you could even be disqualified from the subject.

Protect Yourself - Know the rules:



1 Be informed

You're not allowed to use AI tools when you're in an exam. Your teachers will tell you if you're allowed to use AI tools when doing your coursework - the rules will depend on your qualification. Even if you're allowed to use AI tools, you can't get marks for content just produced by AI - your marks come from showing your own understanding and producing your own work.



2 Reference, reference, reference!

If you're allowed to use AI tools, you must reference them clearly. Name the AI tool you used. Add the date you generated the content. Explain how you used it. Save a screenshot of the questions you asked and the answers you got.



3 Declare it's all your own work

When you hand in your assessment, you have to sign a declaration. Anything without a reference must be all your own work. If you've used an AI tool, don't sign the declaration until you're sure you've added all the references.