

CEIAG Group – 4th February 2020

Chesterfield – Economic Update



CHESTERFIELD
BOROUGH COUNCIL

Emily Williams – Senior Economic Development Officer

Economic snapshot of Chesterfield

Population

104,600

Population (2017)



65,300

Working age population (2017)



52,700

Economically active (2017)



GVA

(economic output - 2017)

£2,230

Million



GVA increase
+17%
over 5 years
(2012-17)

Key employment sectors

50,000

Jobs in Chesterfield borough (2017)

12,000

Health related



10,000

Retail & wholesale



7,000

Professional services



5,000

Manufacturing



Employment
increase
+6%
over 10 years
(2007 - 2017)

Growth strategy :



3,270

Businesses (2018)



330

New start
businesses (2017)



+17%

Increase in
businesses over 5
years (2013-18)

91%

Chesterfield town
centre retail
occupancy rate -
(2019) compared
to 88% nationally



51%

Proportion of working age
population qualified to
NVQ3 and above -



1120

Apprenticeship starts -
(2017/18), almost half at
level 3 or above.



3.1%

Unemployment rate -
(2019), 2.8% nationally

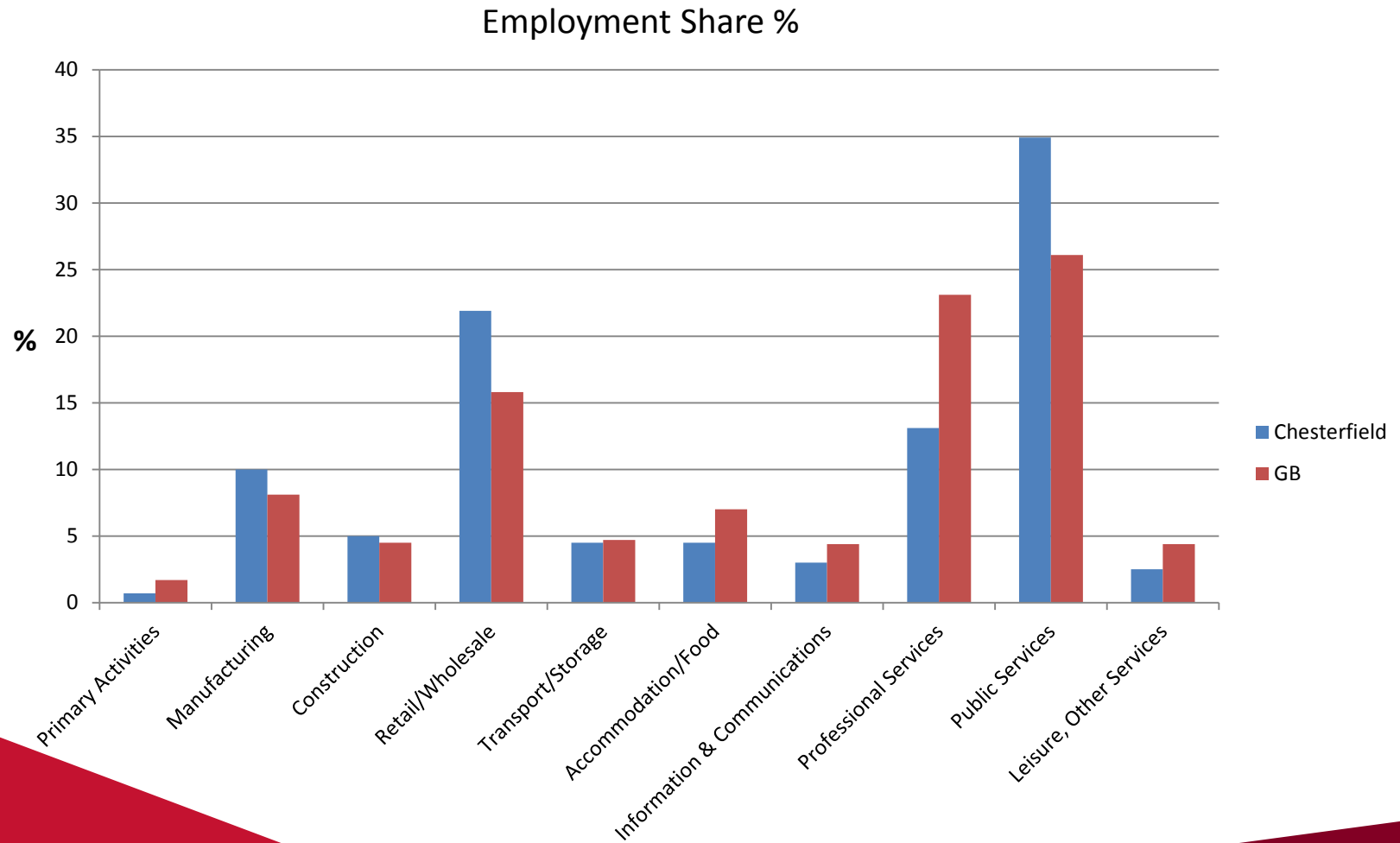


66.1%

Proportion of young people achieving 5 A*-C grades -
(59.3% nationally)



Employment Structure



Employment Forecasts (2048)

| Chesterfield Employment Forecasts (2048) | | | | | |
|--|-------------------|-------------------------|--------------------|---------------------------|--------------------|
| Sector | Chesterfield 2018 | Baseline Scenario (12%) | Change (%) | HS2 Growth Scenario (15%) | Change (%) |
| Primary Activities & Utilities | 400 | 400 | 0 | 400 | 0 |
| Manufacturing | 4,500 | 3,400 | -1,100 (-25%) | 3,500 | -1,000 (-22%) |
| Construction | 2,250 | 2,500 | 250 (11%) | 2,550 | 300 (13%) |
| Retail / Wholesale | 11,000 | 11,250 | 250 (2%) | 11,300 | 300 (3%) |
| Transport & Storage | 3,000 | 3,850 | 850 (28%) | 4,150 | 1,150 (38%) |
| Accommodation & Food Services | 2,500 | 3,000 | 500 (20%) | 3,050 | 550 (22%) |
| Information & Communications | 1,500 | 1,750 | 250 (17%) | 1,950 | 450 (30%) |
| Financial & Professional Services | 7,600 | 8,450 | 850 (11%) | 9,150 | 1,550 (20%) |
| Public Admin, Education, Health | 17,750 | 21,850 | 4,100 (23%) | 21,850 | 4,100 (23%) |
| Arts, Recreation and Other Services | 1,600 | 1,950 | 350 (19%) | 2,000 | 400 (25%) |
| Total | 52,100 | 58,400 | 6,300 (12%) | 59,900 | 7,800 (15%) |

Key Projects: Chesterfield Waterside

A new mixed use urban neighbourhood - 30,000 sqm office space, 1,500 residential units, hotel, retail and leisure uses



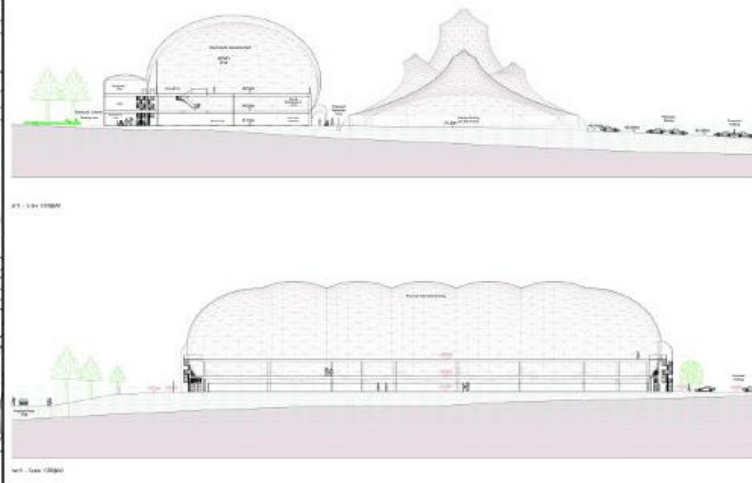
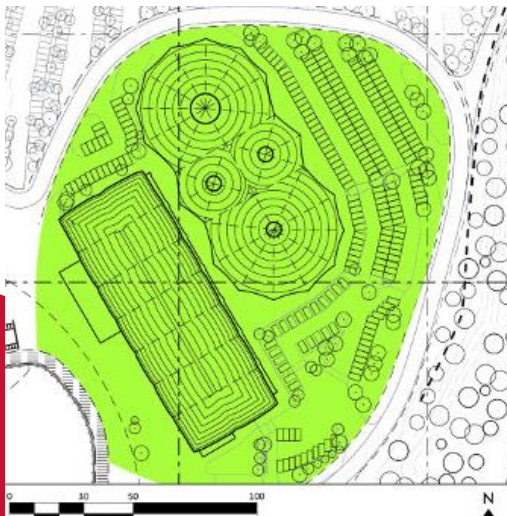
Key Projects: Northern Gateway



- Former Co-op redeveloped – 92 bedroom Premier Inn
- 530 space MSCP
- Enterprise Centre – 32 high quality offices
- Enhanced public realm

Key Projects: PEAK: Gateway, Resort Campus

- Phase 1 Regional Attractions include:
- Indoor Adventure Activity Centre
- Outdoor Water Courses and Lake
- Gateway Building and Travel Hub
- Covered Events Space & Amphitheatre
- 15km ON site Multi Discipline Cycling Trails connected to 1,000 of miles OFF site trails.

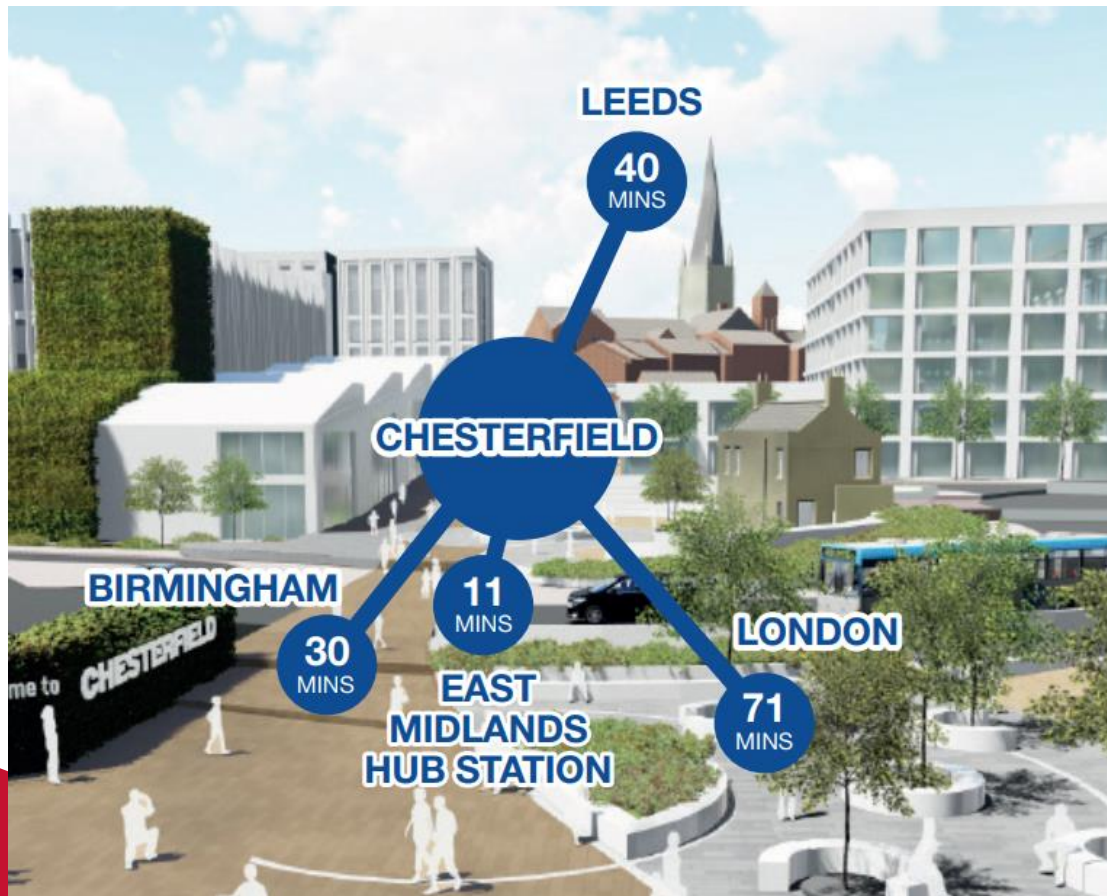


Key Projects: Markham Vale

- 200-acre business park with direct access to the M1 motorway via a dedicated junction, J29a.
- 2,236 jobs in total
- 2018 saw 164,500 sq. ft. secured of new commercial space for three global businesses:
 - Protec International
 - Sterigenics
 - Grangers International
 - MV55
- Additional completed schemes include occupiers such as Great Bear, Marston's Pubs, Ferdinand Bilstein Ferdinand Bilstein and Euro Garages.



Key Projects: HS2



Economic Benefits

- 4720 new homes
- 10,220 new jobs
- £270m local economy

Skills & Employment Projects

MADE In Chesterfield

- More than 2500 students engaged
- Bring Schools & Business Together to Showcase the Manufacturing Sector



Local Labour Activity

- 231 Jobs
- 25 Apprenticeships
- £12.4m contracts to local supply chain

